



UPA-A INTERIM CERTIFICATION

2024

ACCEPTABLE DEFLECTION FORCE (ADF)

ADF TEST

Paddle Measurements

- Maximum length (butt of handle to top of paddle, including edge guard) - 17 in
- Maximum combined length plus width - 24 in

Test Equipment

- PPL uses Automated Design Corporation's (ADC) Pickle Press
 - Load frame calibrated for relevant load ranges
 - Paddle compression head (see appendix A)
 - 1/4" width parallel supports spaced 6" center to center, raised 3/16" above frame



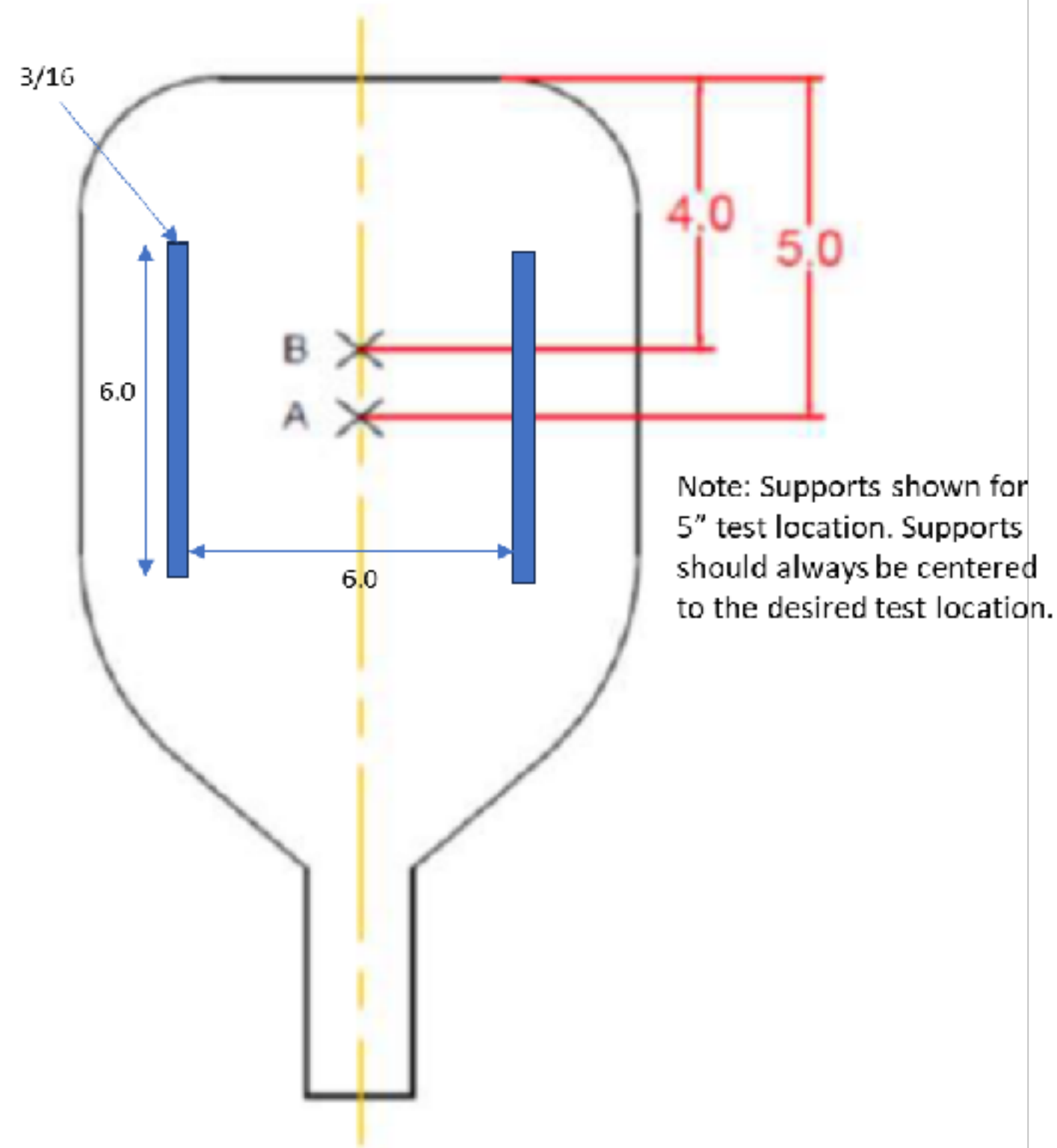
ACCEPTABLE DEFLECTION FORCE (ADF)

ADF TEST PROCEDURE

- 1.1 – Position the paddle on the parallel supports
- 1.2 – Orient paddle for testing; center of Paddle Compression Head should be directly above the appropriate paddle test location (see reference image below)
 - 1.2.1 - In addition to the prescribed test locations, PPL reserves the right to test at any location on the paddle.
- 1.3 – Commence Compression Test (all loading movements performed with crosshead speed of 0.05 in/s)
 - 1.3.1 – Apply 5 lb preload
 - 1.3.2 – Zero the load measurement
 - 1.3.3 – Compress to 0.0625” depth (beyond the preload position)
 - 1.3.4 – Record Force at 0.0625” depth (this is the Deflection Force for the associated paddle test location)
 - 1.3.5 – Return Compression Head to its home position
- 1.4 – Repeat 1.3.1-5 per compliance requirement

ACCEPTABLE DEFLECTION FORCE (ADF)

Deflection Force
Measurement Locations



ADF TEST PROCEDURE

Conditioning Procedure

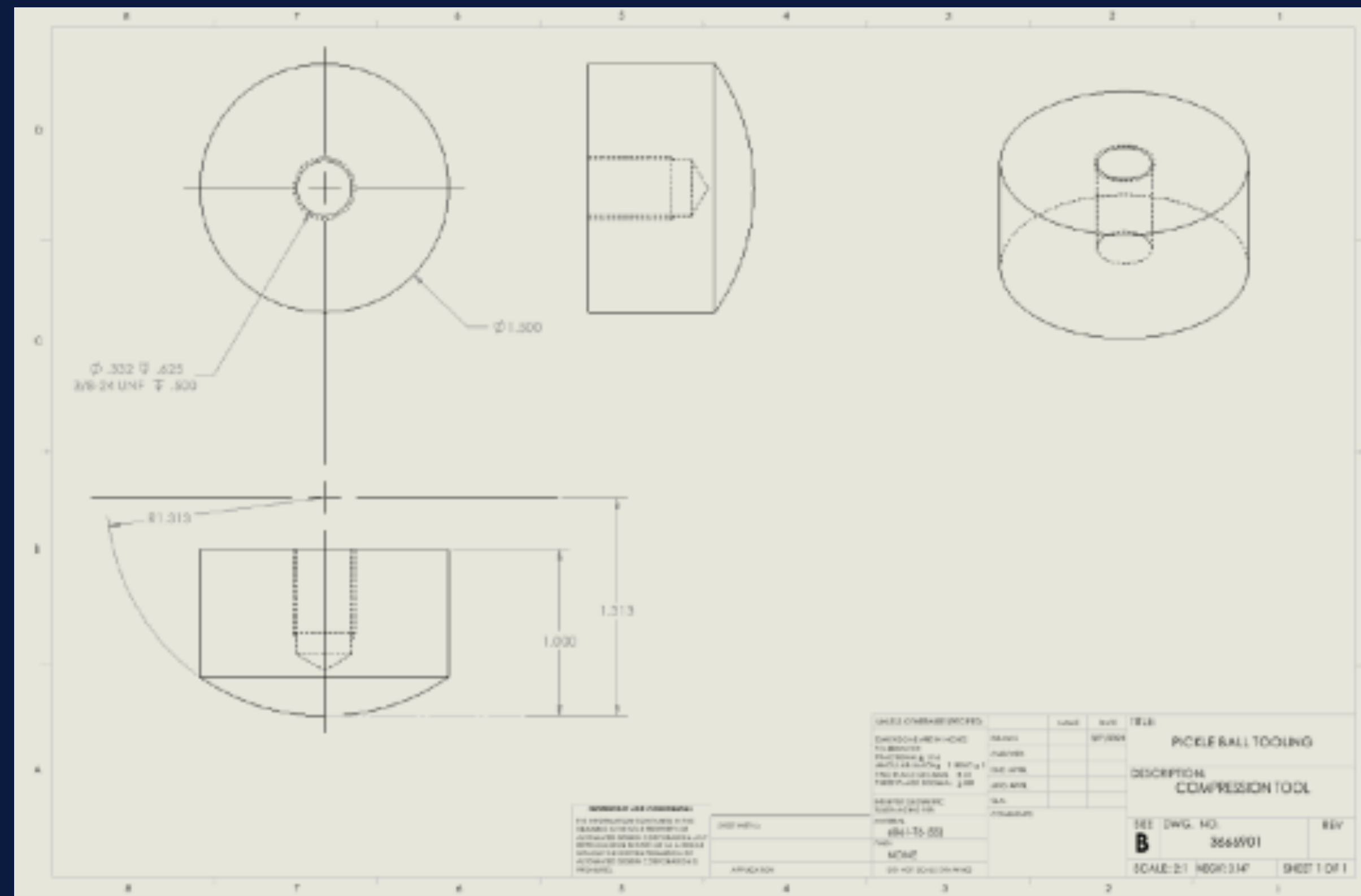
1. Paddles must be conditioned to the appropriate temperature for no less than 4 hours and no more than 24 hours.
2. After the paddle has been conditioned, for every minute that the paddle is outside of the conditioning chamber, it must go back in the chamber for 15 minutes before the next test.

Pass/Fail Criteria

1. Both faces of the paddle must have an ADF of 46 lb or more at ambient conditioning (70-75°F)
2. Both faces of the paddle must have an ADF of 42 lb or more at hot conditioning (115-120°F)

ACCEPTABLE DEFLECTION FORCE (ADF)

Appendix A



Compression head material - stainless steel

ROTATIONS PER MINUTE (RPM)

Spin Test Equipment

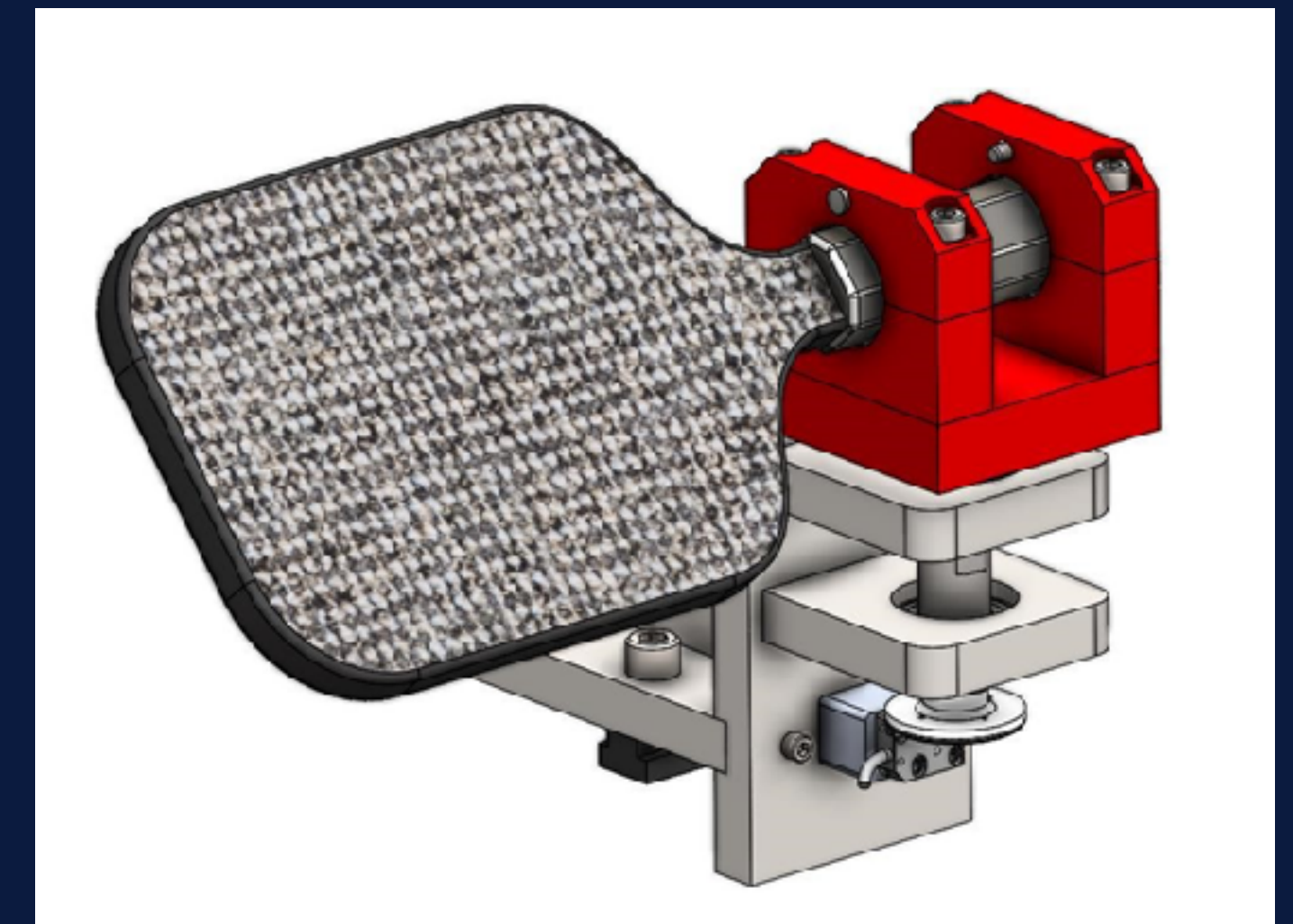
- ADC Pickle Performance Piston Cannon
- Vulcan VPRO FLIGHT pickleballs
- Phantom Miro C211 and corresponding Phantom Camera Control (PCC) software
- Testing is performed at ambient room conditions (70°F ± 5 °F and 50% humidity)

ROTATIONS PER MINUTE (RPM)

Spin Test

Test Procedure

- 1.1 – Secure the paddle in the handle clamp and ensure that the paddle clamp pivot remains fixed, so the paddle does not rotate
- 1.2 – Orient paddle for testing; use inclinometer to verify angle and use laser to ensure ball impacts center of paddle face
- 1.3 – Commence Spin Test
 - 1.3.1 – Fire piston to launch the ball at constant ball speed of 40 MPH
 - 1.3.2 – Record impact with high-speed camera
 - 1.3.3 – Repeat for 5 trials at set angle, using a new ball for each impact
 - 1.3.4 – Use motion tracking software to calculate spin rate by analyzing video footage
- 1.4 – Repeat 1.3.1-4 for each angle (25°, 30°, 35°)
- 1.5 – Average the spin rate of the 5 trials at each angle



Pass/Fail Criteria

Spin Limit: Spin rate cannot exceed 2200 RPM at any angle

PRICING

UPA-A Interim Certification Costs

UPA-A Interim Certification License is prorated to \$6,000 per month, starting from the first full month certification is granted and runs through 2024 (and can be extended if UPA-A does not offer certification by Jan 1, 2025)

Each model is an additional \$5,000.

Each variant (shape, thickness, handle length, etc...) is an additional \$1,000.

NOTE: Aesthetic design, graphics, color, or non-functional aspects are not considered a variant.

**UPA-A certification is only required for professionals playing at the professional level at UPA events.*

***USAP approved paddles will still be accepted for play throughout 2025 for amateur play at UPA events.*





UPA-A INTERIM CERTIFICATION

2024